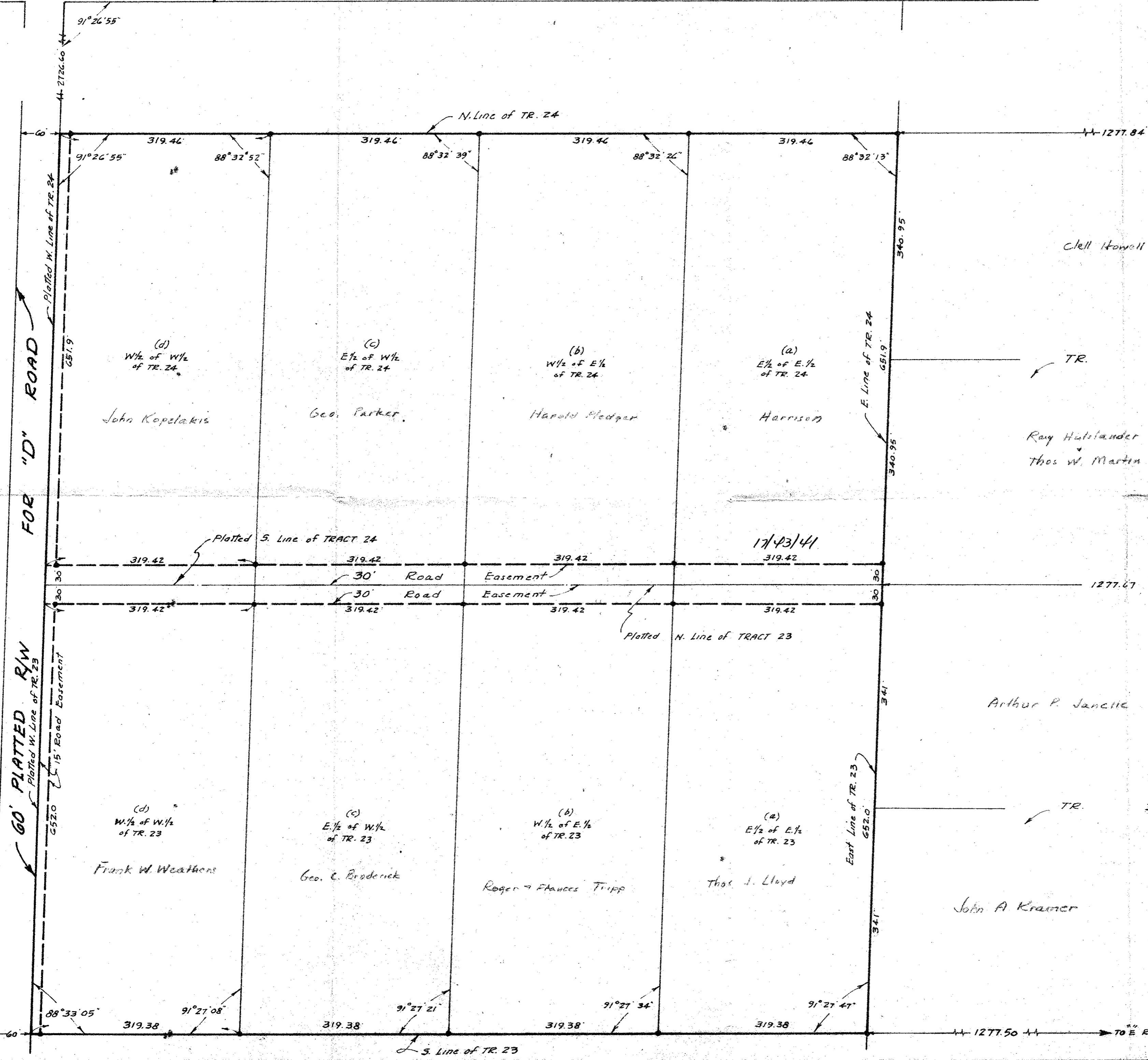


60' PLATTED ROAD R/W

FOR "D" ROAD

GO' PLATTED R/W

GO' PLATTED R/W - "E" ROAD



JOHN P. DAVIS & ASSOC., INC.
 REGISTERED ENGINEERS AND SURVEYORS
 WEST PALM BEACH - LAKE WORTH, FLORIDA

SURVEY OF
TRACTS 23 & 24, BLOCK "D"
LOXAHATCHEE GROVES
 (PLAT BOOK 12, PAGE 29)
 LOXAHATCHEE, PALM BEACH COUNTY, FLA.

FOR
ARTHUR MURRAY

DATE: SEPT. 1969 SCALE: 1" = 100' REF: F.B. L-24, P. 12